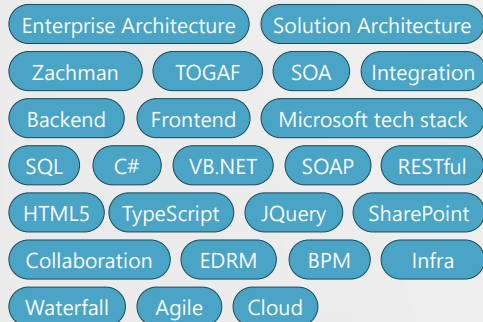




MIGUEL FERREIRA

Senior Solution Architect
Enterprise & Solutions

Master's in Computer Sciences, Post-degree in e-Commerce and Internet, and Bachelor's in Multimedia Engineering.



Multilingual senior IT architect with 25+ years of experience in devising enterprise-class bespoke solutions using Microsoft and opensource technologies to successfully deliver business value by adopting industry-standard frameworks to bring business and IT together.

Microsoft certified in solution development, databases and infrastructure, certified project manager, ITSM, CIW Security Analyst, among others.

Organised, self-motivated, and team player.

📍 Basel, CH | 🌐 C-Permit | 🎂 Jan '76

✉ Miguel@Ferreira-family.org

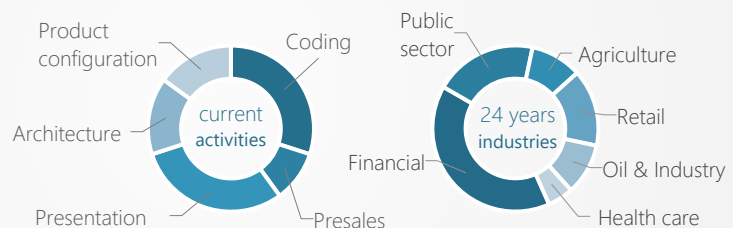
☎ +41 76 2133552

🌐 ch.linkedin.com/in/corban

▶ ACADEMICS

- 2021 - 2023 | **uAb – UTAD**
Doctoral studies in
Web Science and Technology
- 2004 - 2007 | **uAb – University of Sheffield**
Master of Sciences – 3rd level degree
Thesis: «Hacking with SQL Injection Exposed»
Post-degree in Internet & e-Commerce
Final grade: A
- 2003 - 2004 | **Instituto Politécnico Autónomo**
Licenciatura in Computer Sciences
Final grade: 75%
- 2000 - 2003 | **Inst. Sup. Tecnologias Avançadas**
Bachelor's in Multimedia Engineering
Final grade: 70%
- 1994 - 1998 | **Instituto Superior Técnico**
Mechanical Engineering – incomplete

▶ KNOW-HOW



▶ CERTIFICATIONS

Microsoft

MCP, MCSD (solution developer), MCSD.NET, MCDBA (database admin and development), MCSA (systems analyst), MCSA Security, MCTS SQL (technology specialist), MCTS .NET Web, MCITP DB (IT professional), MCTS SharePoint

CompTIA

i-Net+, Network+, IT-Project+, e-Biz+, Security+



Associate, Professional, Master Designer, Security Analyst, Master Administrator

ITIL Service Management



Ethical Hacker



▶ SOME PROJECTS

EquatePlus | Lead Architect | Finance

Architect of a modern RESTful multi-channel financial platform reusing a legacy custom Java financial backend.



▶ [discover more](#)

Archroma | Change mgr. | IT separation

Headed the separation and setup of a 1.2B\$ global divestiture acting as SPOC between Archroma and Clariant and Archroma's change manager.

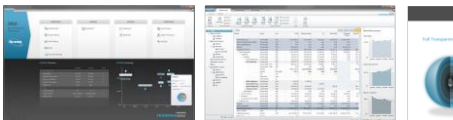
i-Ag | Lead Architect | agriculture



The Farming Decision making system is a cutting-edge precision farming platform that makes use of R&D and comprehensive in-field equipment to monitor, predict and carry out prescriptions, empowered by a sophisticated IT solution that copes with massive amounts of information.

▶ [discover more](#)

WalletSizing | Frontend Arch. | Banking



Wallet management SaaS platform delivering high-end financial modelling analytics over a .NET 4 WPF rich client.

▶ [discover more](#)

SIBAL | Architect | banking frontoffice



SharePoint, BizTalk and K2 brought together by the HP.BizProc Framework to deliver a process-centric retail banking frontoffice.

▶ [discover more](#)

▶ PROFESSIONAL EXPERIENCE

2012 - now

Infosys Technologies

Senior Architect

Solution architecture of multistream programmes.

Lead solution development ranging from functional-to-technical. This involves being intimately involved with all delivery activities (software development lifecycle activities, code reviews, quality framework, research).

Work with key stakeholders to determine solution requirements, design, and impact in the infrastructure.

Translate business requirements and programme vision into solution architecture.

Strong problem abstraction and presentation skills.

Develop new approaches to complex design problems by investigating new technologies and patterns and staying on top of the ongoing developments in the industry.

Prioritise workload and manage teams and scope in fast-paced environments.

Team management of teams operating in Waterfall and Agile onsite and offshore of up to 40 people.

Oversee and coach technical architects.

2010 - 2012

Vallstein

Senior Architect

Product development of WalletSizing®, the cutting-edge Bank Relationship Management solution from Vallstein which is at the core of the company's go-to-market offering.

Product management, e.g. strategy and roadmap definition, product backlog management, release management.

2002 - 2010

Hewlett-Packard – Consulting & Integration

Senior Solutions Architect

Led a solution area within the Consulting department to devise and deliver business process-centric solutions including workflow, document management, collaboration, and line-of-business applications.

Proficiency in designing and implementing enterprise business environments, e-Business architectures, and multifaceted solutions that encompass workflow, document management and collaboration.

Team leading experience up to 10 onsite members working ensemble with an offshore group.

2000 – 2002

Compaq - Global Services

Technical Consultant

Solution developer acting in the e-Business enterprise solutions field, mainly using Microsoft technologies. In-depth knowledge concerning the building-blocks of a project was a requirement for this role.

1998 – 2000

Reditus

Web Consultant

Responsible for the Web Design and Web Development division within the company's consulting department

▶ SOME AWARDS

- 2013 **Infosys**
Together We Achieve More
 We got it done. Together! Thank you for your hard work and dedication.
- 2008 **Hewlett-Packard**
HP Services Top Achiever
- 2007 **Hewlett-Packard**
e-Award for Outstanding Efforts
 Great commitment to project and business needs; High contribution, always exceeding personal objectives.
- 2006 **Hewlett-Packard**
e-Award for Outstanding Efforts
- 2006 **Hewlett-Packard**
e-Award for Outstanding Efforts
- 2006 **Hewlett-Packard**
e-Award for Outstanding Efforts
 Miguel, is a key person in developing the .NET area in Portugal, playing a decisive role in SIBAL PoC for CCAM and the SEF project among others.
- 2005 **Hewlett-Packard**
e-Award for Outstanding Efforts
 Major contribution in developing the .NET area.
- 2005 **Hewlett-Packard**
e-Award for Outstanding Efforts
 Miguel, your contribution to our Bank of Ireland and Wratsila projects, your creativity and architectural excellence have significantly helped to achieve that MS is now making our solution an important part of the world-wide standard for asset management.

▶ LANGUAGES

	understand	speak	write
Portuguese	native	native	native
English	C2	C2	C2
French	C1	B1	A1
Spanish	C1	B2.	A1

▶ COMPETENCES

- Solution Development**

Requirements refinement	■ ■ ■ ■ ■	Presenting	■ ■ ■ ■ ■
Workshops	■ ■ ■ ■ ■	Modeling	■ ■ ■ ■ ■
- Software Development Lifecycle Management**

Waterfall	■ ■ ■ ■ ■	Agile	■ ■ ■ ■ ■
Product management	■ ■ ■ ■ ■	Release mgmt.	■ ■ ■ ■ ■
- Team Management**

Directing	■ ■ ■ ■ ■	Reviewing	■ ■ ■ ■ ■
Mentoring	■ ■ ■ ■ ■	Empowerment	■ ■ ■ ■ ■
- Other Management**

Stakeholder management	■ ■ ■ ■ ■	Project mgmt.	■ ■ ■ ■ ■
------------------------	-----------	---------------	-----------

▶ TECHNICAL SKILLS

- Enterprise Architecture Frameworks**

Zachman	■ ■ ■ ■ ■	TOGAF	■ ■ ■ ■ ■
---------	-----------	-------	-----------
- Solution Development Patterns**

S.O.L.I.D.	■ ■ ■ ■ ■	Entity modeling	■ ■ ■ ■ ■
Service-Oriented (SoA)	■ ■ ■ ■ ■	SOAP	■ ■ ■ ■ ■
Model-View-Controller (MVC)	■ ■ ■ ■ ■	RESTful	■ ■ ■ ■ ■
Relational Databases	■ ■ ■ ■ ■	NoSQL	■ ■ ■ ■ ■
Business Process Mgt. (BPM)	■ ■ ■ ■ ■	Geo-Spatial DB	■ ■ ■ ■ ■
- Development Languages & Frameworks**

C#	■ ■ ■ ■ ■	Visual Basic.NET	■ ■ ■ ■ ■
Entity framework	■ ■ ■ ■ ■	LINQ	■ ■ ■ ■ ■
Transact-SQL	■ ■ ■ ■ ■	Spatial SQL	■ ■ ■ ■ ■
JavaScript & TypeScript	■ ■ ■ ■ ■	JQuery	■ ■ ■ ■ ■
HTML5	■ ■ ■ ■ ■	CSS & SCSS	■ ■ ■ ■ ■
Windows Presentation Foundation (WPF)	■ ■ ■ ■ ■		
Windows Workflow Foundation (WWF)	■ ■ ■ ■ ■		
Windows Communication Foundation (WCF)	■ ■ ■ ■ ■		

- Products**

MS SQL Server	■ ■ ■ ■ ■	SharePoint	■ ■ ■ ■ ■
Team Foundation Server (TFS)	■ ■ ■ ■ ■	K2 BlackPearl	■ ■ ■ ■ ■
MS Active Directory	■ ■ ■ ■ ■	Azure cloud	■ ■ ■ ■ ■
- Integration with**

SAP	■ ■ ■ ■ ■	Sales Force	■ ■ ■ ■ ■
-----	-----------	-------------	-----------

▶ RECOMMENDATIONS

Gareth Knight

DevOps Lead at Roche

Miguel is a dynamic Architect with exceptional analytic and communication skills. Not only does Miguel have great technical abilities, he has the most amazing presentation creation skills I have seen outside of a marketing brochure. This is a great asset when coming to presenting technical solutions to business stakeholders. He is a great guy and someone I learnt allot from both on the technical front but also personally.

Mario Wörner

Project Manager at D-ploy

Miguel and I worked together on a amazing project. With his help the company Archroma was able to migrate 3500 users to a complete new IT in about 6 months. From building the strategy on a white board to deployment of PCs in the middle of a production plant - Miguel was involved in all the activities. Great energy, spirit and person.

Titus Cunnen

CFO at Makro

Miguel is a truly professional with great know how and clear ideas on software development. For me it is has been a very positive experience working with Miguel and not least because Miguel is a friendly and hardworking team player.

Valter Raimundo

Group Manager at Avanade

Miguel is an excellent team player with huge knowledge on any subject or aspect he gets engaged in developing. He has a strong background in software development and design, and well structured soft skills, which compose the basis for an exceptional professional. He is always committed with the team and organization goals and well known as to have good team working and communication abilities!

Shaun Leisegang

CEO and Co-founder at AppsForOps

Miguel is one of those rare people that combine his passion for people and technology to create world class solutions that are aesthetically pleasing, user friendly and most importantly solve real world business problems.

Miguel has a very solid educational background that he combines with his real world experience and his in depth knowledge of multiple technology stacks to solve business problems with technology.

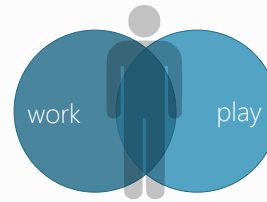
Miguel is an invaluable resource to any team and I recommend him highly.

▶ WORK/PLAY BALANCE

People-orientated
team player

Challenging
few dull moments

Fast-paced
change gears fast and often



Socializing
travel and meet folks

Family
spend quality time

Artistic
piano, photography, design

▶ EXPECTATIONS

New challenges and problems to solve

Control of own destiny

play hard--work hard

The chance to have fun

No close supervision

Excitement Opportunity for rapid advancement

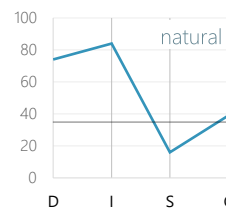
Unusual, new or difficult assignments

To be seen as a leader

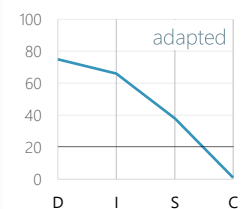
Independence

Prestige, position and titles

▶ BEHAVIOURAL PROFILE



Dominance
Inducement
Submission
Compliance



Miguel believes in getting results through other people. He prefers the "team approach." He wants to be seen as his own person, but usually projects it in friendly terms. He is good at creating enthusiasm in others. He often will become friends with his customers. He has an extremely high trust level and is optimistic. He is highly excited by what influences him.

▶ REFERENCES

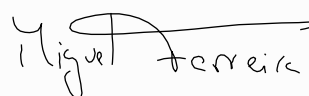
Valter Raimundo | Delivery Director | Avanade

✉ valter_raimundo@hotmail.com | ☎ +44 7500 480107

Jorge Negrão | Solution Architect | Infosys

✉ jorge_negrão@infosys.com | ☎ +41 79 6782257

Basel, 2024



▶ [discover more](#)

diplomas | certificates | awards | behavioural profile