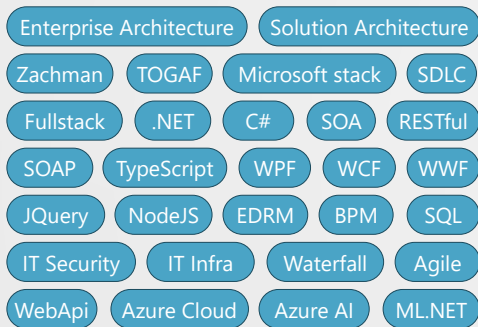




C MIGUEL FERREIRA

Enterprise IT Solution Architect

Doctoral studies in Web Science and Technology, MSc in Computer Sciences, Post-degree in e-Commerce and Internet, and BSc in Multimedia Engineering.




 Hands-on senior solution architect with 25+ years of experience in devising enterprise-class bespoke solutions using Microsoft and opensource technologies to successfully deliver business value by adopting industry-standard practices and frameworks to bring business and IT together.

Microsoft certified in solution development, databases, infrastructure and AI, certified IT project manager, Scrum certified among others.

Organised, self-motivated, and team player.

 Basel, Switzerland |  C-Permit |  '76

 Miguel@Ferreira-family.org

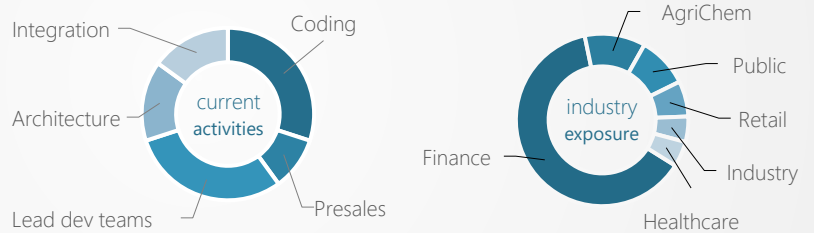
 +41 76 2133552

 ch.linkedin.com/in/corban

▶ ACADEMIC STUDIES

- 2023 | **uAb – UTAD**
Doctoral studies in Web Science & Technology
[Accelatrix](#) - A parallel functional programming framework for in-browser processing of enumerations of business entities (PhD public trials expected in early 2026)
- 2007 | **uAb – University of Sheffield**
MSc in e-Commerce & Internet
 Hacking with SQL Injection Exposed
- 2004 | **IPA**
Licenciatura (4-year degree) in Computer Sciences
- 2003 | **ISTEC**
BSc in Multimedia Engineering
- 1998 | **IST**
BSc in Mechanical Engineering
 Incomplete – attendance of the 3rd year

▶ KNOW-HOW



▶ CERTIFICATIONS

Microsoft

MCP, MCSA, MCSA.NET, MCSDBA (database admin and development), MCSA (systems analyst), MCSA Security, MCTS SQL (technology specialist), MCTS .NET Web, MCITP DB (IT professional), MCTS SharePoint, Azure Fundamentals, Azure AI Fundamentals

CompTIA

i-Net+, Network+, IT-Project+, e-Biz+, Security+

CIW

Associate, Professional, Master Designer, Security Analyst, Master Administrator



ITIL Service Management



Scrum
Professional Agile Leadership
Evidence-based Management



Ethical Hacker



TOGAF

▶ SOME PROJECTS

EquatePlus | Lead Architect | Finance

EquatePlus is the leading SaaS solution for equity compensation management, widely recognised as the industry standard among Fortune 500 companies for managing employee share plans, stock options, and equity awards. The platform, developed by Equatex, a spin-off from UBS, and later acquired by ComputerShare (their largest competitor), is trusted by global corporations for its robust compliance features and comprehensive handling of complex international equity compensation programs.

Lead architect responsible for the middle-to-frontend remaking while ensuring business continuity during the transformation.

A bespoke solution was crafted using a RESTful semantic service layer against an existing Java Spring backend, surfaced to a custom-built standalone frontend in TypeScript with Functional Programming.

Development of EquateMobile as a second tenant of the multi-channel service-orientated architecture.

Implementation of EquateAccess, a white-labelled companion app for second-factor operations using the FIDO protocol.



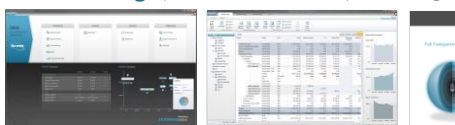
▶ [discover more](#)

Archroma | Change mgr. | IT separation

Headed the separation and setup of a 1.2B\$ global divestiture, acting as SPOC between Archroma and Clariant, and Archroma's change manager.

Business continuity was maintained throughout the separation and global setup process.

WalletSizing | Frontend Arch. | Banking



Wallet management SaaS platform delivering high-end financial modelling analytics over a .NET 4 WPF rich client.

▶ [discover more](#)

▶ PROFESSIONAL EXPERIENCE

since
2012

Infosys Technologies **Senior Solution Architect**

Work with key stakeholders to determine solution requirements, design, and impact in order to translate business requirements and programme vision into an actionable solution architecture.

Very strong problem abstraction and presentation skills to develop cunning approaches to complex design problems by investigating technologies and patterns and staying up-to-date with technical advancements.

Lead solution development ranging from functional to technical in fast-paced environments. This involves being intimately involved (hands-on) with all delivery activities (architecture, research, planning, software development lifecycle activities, prioritisation, code reviews, quality framework, etc.).

Deep expertise in harmonising diverse IT ecosystems. While specialising in Microsoft technologies, I excel at creating seamless integrations across platforms including SAP, Java Spring, Oracle, and opensource frameworks, focusing on adaptability and cross-system compatibility rather than single-vendor solutions.

Team management of teams comprised of developers, testers, business analysts, and architects operating in Waterfall and Agile (KanBan and Scrum), onsite and offshore, of up to 40 members.

Oversee and coach technical architects.

2010
⋮
2012

Vallstein **Senior Architect**

Product development and management of WalletSizing®, the Bank Relationship Management SaaS solution from Vallstein which is at the core of the company's go-to-market offering.

2002
⋮
2010

Hewlett-Packard – Consulting & Integration **Senior Solution Architect**

Led a solution area within the Consulting department to devise and deliver business process-centric solutions including workflow, document management, collaboration, and line-of-business applications.

Proficiency in designing and implementing enterprise business environments, e-Business architectures, and multifaceted solutions that encompass workflow, document management and collaboration.

Team leading experience up to 10 onsite members working ensemble with an offshore group.

2000
⋮
2002

Compaq - Global Services **Technical Consultant**

Solution developer acting in the e-Business enterprise solutions field, mainly using Microsoft technologies. In-depth knowledge concerning the building-blocks of a project was paramount to successfully deliver enterprise-class solutions.

1998
⋮
2000

Reditus **Web Consultant**

Responsible for the Web Design and Web Development division within the company's consulting department.

Syngenta i-Ag | Lead Arch. | agrichem



Cutting-edge precision farming platform that makes use of R&D crop models and comprehensive in-field equipment to monitor, predict and carry out prescriptions, empowered by a sophisticated IT solution that copes with massive amounts of geo-referenced data.

Built on Microsoft state-of-the-art technologies like SQL spatial, MVC, WCF, and .NET 4.5 using a global delivery model. The platform has been launched globally.

▶ [discover more](#)

SIBAL | Architect | banking frontoffice



SharePoint, BizTalk, K2, C# and JavaScript brought together by a custom-built framework to deliver a business process-centric financial frontoffice to carry out the complete business of a major retail bank with 800 branches nationwide.



▶ [discover more](#)

▶ LANGUAGES

	understand	speak	write
Portuguese	native	native	native
English	C2	C2	C2
French	C1	B1	A1
Spanish	C1	B2.	A1

▶ COMPETENCES

Solution Development

Requirements refinement	■ ■ ■ ■ ■	Presenting	■ ■ ■ ■ ■
Workshops	■ ■ ■ ■ ■	Modeling	■ ■ ■ ■ ■

Software Development Lifecycle Management

Waterfall	■ ■ ■ ■ ■	Agile	■ ■ ■ ■ ■
Product management	■ ■ ■ ■ ■	Release mgmt.	■ ■ ■ ■ ■

Team Management

Directing	■ ■ ■ ■ ■	Reviewing	■ ■ ■ ■ ■
Mentoring	■ ■ ■ ■ ■	Empowerment	■ ■ ■ ■ ■

Other Management

Stakeholder management	■ ■ ■ ■ ■	Project mgmt.	■ ■ ■ ■ ■
------------------------	-----------	---------------	-----------

▶ TECHNICAL SKILLS

Enterprise Architecture Frameworks

Zachman	■ ■ ■ ■ ■	TOGAF	■ ■ ■ ■ ■
---------	-----------	-------	-----------

Solution Development Patterns

S.O.L.I.D.	■ ■ ■ ■ ■	DDD	■ ■ ■ ■ ■
Service-Oriented (SoA)	■ ■ ■ ■ ■	SOAP	■ ■ ■ ■ ■
Model-View-Controller (MVC)	■ ■ ■ ■ ■	RESTful	■ ■ ■ ■ ■
Relational Databases	■ ■ ■ ■ ■	Microservices	■ ■ ■ ■ ■
Functional Programming	■ ■ ■ ■ ■	BPM	■ ■ ■ ■ ■

Development Languages & Frameworks

C#	■ ■ ■ ■ ■	.NET / .NET Core	■ ■ ■ ■ ■
Entity framework	■ ■ ■ ■ ■	LINQ	■ ■ ■ ■ ■
Transact-SQL	■ ■ ■ ■ ■	MVC + WebApi	■ ■ ■ ■ ■
JavaScript & TypeScript	■ ■ ■ ■ ■	JQuery	■ ■ ■ ■ ■
Angular / Vue	■ ■ ■ ■ ■	CSS & SCSS	■ ■ ■ ■ ■
Windows Presentation Foundation (WPF)	■ ■ ■ ■ ■		
Windows Workflow Foundation (WWF)	■ ■ ■ ■ ■		
Windows Communication Foundation (WCF)	■ ■ ■ ■ ■		

Products

MS SQL Server	■ ■ ■ ■ ■	SharePoint	■ ■ ■ ■ ■
Visual Studio	■ ■ ■ ■ ■	ML.NET	■ ■ ■ ■ ■
Azure AI suite	■ ■ ■ ■ ■	Azure cloud	■ ■ ■ ■ ■

Integration with

SAP	■ ■ ■ ■ ■	NodeJS	■ ■ ■ ■ ■
-----	-----------	--------	-----------

▶ RECOMMENDATIONS

Gareth Knight

DevOps Lead at Roche

Miguel is a dynamic Architect with exceptional analytic and communication skills. Not only does Miguel have great technical abilities, he has the most amazing presentation creation skills I have seen outside of a marketing brochure. This is a great asset when coming to presenting technical solutions to business stakeholders. He is a great guy and someone I learnt allot from both on the technical front but also personally.

Mario Wörner

Project Manager at D-ploy

Miguel and I worked together on a amazing project. With his help the company Archroma was able to migrate 3500 users to a complete new IT in about 6 months. From building the strategy on a white board to deployment of PCs in the middle of a production plant - Miguel was involved in all the activities. Great energy, spirit and person.

Titus Cunnen

CFO at Makro

Miguel is a truly professional with great know how and clear ideas on software development. For me it is has been a very positive experience working with Miguel and not least because Miguel is a friendly and hardworking team player.

Valter Raimundo

Group Manager at Avanade

Miguel is an excellent team player with huge knowledge on any subject or aspect he gets engaged in developing. He has a strong background in software development and design, and well structured soft skills, which compose the basis for an exceptional professional. He is always committed with the team and organization goals and well known as to have good team working and communication abilities!

Shaun Leisegang

CEO and Co-founder at AppsForOps

Miguel is one of those rare people that combine his passion for people and technology to create world class solutions that are aesthetically pleasing, user friendly and most importantly solve real world business problems.

Miguel has a very solid educational background that he combines with his real world experience and his in depth knowledge of multiple technology stacks to solve business problems with technology.

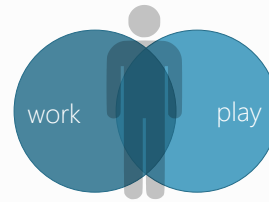
Miguel is an invaluable resource to any team and I recommend him highly.

▶ WORK/PLAY BALANCE

People-orientated
team player

Challenging
few dull moments

Fast-paced
change gears fast and often



Socializing
travel and meet folks

Family
spend quality time

Artistic
piano, photography, design

▶ EXPECTATIONS

New challenges and problems to solve

Control of own destiny

play hard--work hard

The chance to have fun

No close supervision

Excitement Opportunity for rapid advancement

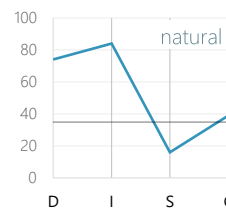
Unusual, new or difficult assignments

To be seen as a leader

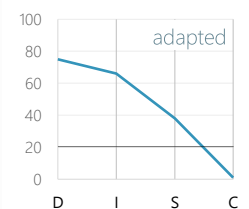
Independence

Prestige, position and titles

▶ BEHAVIOURAL PROFILE



Dominance
Inducement
Submission
Compliance



«Miguel believes in getting results through other people. He prefers the "team approach." He wants to be seen as his own person, but usually projects it in friendly terms. He is good at creating enthusiasm in others. He often will become friends with his customers. He has an extremely high trust level and is optimistic. He is highly excited by what influences him.»

▶ REFERENCES

Valter Raimundo | Delivery Director | Avanade

✉ valter_raimundo@hotmail.com | ☎ +44 7500 480107

Jorge Negrão | Solution Architect | Infosys

✉ jorge_negrao@infosys.com | ☎ +41 79 6782257

Basel, 2025

Miguel Ferreira

▶ [discover more](#)

diplomas | behavioural profile